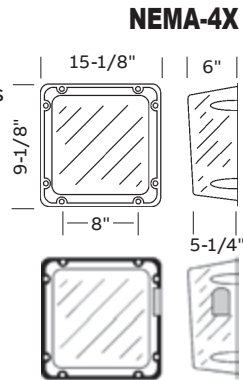


## Accessories

### Catalog number VRS or VRS-4X

#### Application

- ME Series with top mounted heads
- PS Series all mountings
- X10 LED, (wall mounted) AC and AC/DC or self-powered exit with no mounted heads
- ECL Series LED (wall mounted) AC and AC/DC or self-powered
- Preceptor™ Series LED, (wall mounted) AC and AC/DC

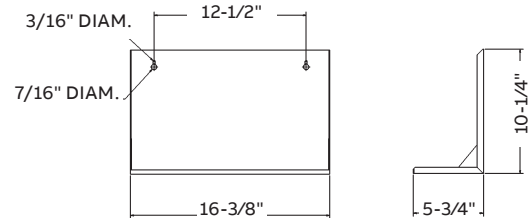


### MP3 mounting platform

Constructed of 18 gauge. steel, the MP3 mounting platform will accommodate all our unit equipment in our 'B' cabinet.

#### How To Order

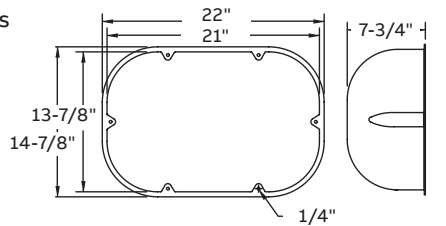
- Mounting platform **MP3-EG**
- Mounting platform, gray **MP3-GY**



### Catalog number VRS-BB or VRSBB-4X

#### Application

- JS Series (small cabinet) top or front mounted heads
- ECC & ECM Series (small cabinet)



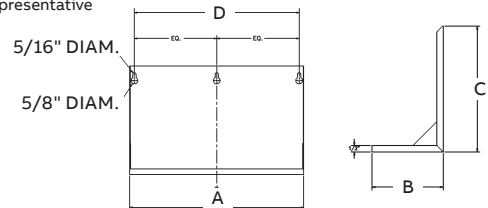
### MP6, MP12, MP24 mounting platform

Constructed of 18 gauge. steel, the MP6, MP12, and MP24 mounting platform will accommodate our unit equipment in our 'C', 'D', and 'E' cabinets respectively.

#### How to order

- Mounting platform (off white) **MP6-EG**
- Mounting platform (off white) **MP12**
- Mounting platform (off white) **MP24**

Optional colors available, contact your sales representative

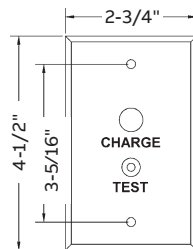


### Remote test switch

Make testing your ceiling mounted equipment easier with the remote test switch. Compatible with 120 or 277 VAC circuits, the remote test switch will interrupt the line voltage to your equipment by means of a momentary push button switch. AC on/Charge status indicator lamp assures that power is going to your emergency lighting.

#### How to order

- Metal faceplate, chrome
- RTS**
- Plastic Faceplate plastic, off white
- RTS-1**

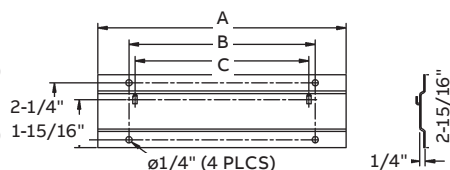


### B1 and B12 mounting brackets

Constructed of 16 gauge. steel, the B1 and B2 mounting bracket will accommodate our unit equipment in our 'A' and 'B' cabinets respectively.

#### How to order

- Mounting bracket (off white) **B1**
- Mounting bracket (off white) **B2**



**Dimensions (inches)**

Part #	A	B	B	D
MP6	17"	7.75"	12.25"	16"
MP12	27.5"	7.75"	12.25"	16"
MP24	27.5"	11.63"	12.25"	16"

**230.1238-E & 230.1239-E**

- Single, double or triple round
- Thermoplastic construction
- Off-white or black finish only
- Mount direct to 4" octagonal box

**Dimensions:**

5" diameter - slotted mounting holes  
3 to 3-9/16" mounting center

**Standard:** EF18, EF18D; and EF9, EF9D

Off-White - 230.1238-E



Black - 230.1239-E



**450.0129-E, 450.0397-E & 450.0398-E**

- Single, double or triple rectangular
- Single, triple or 4-gang steel construction
- Chrome plated finish only
- Mount direct to standard outlet box

**Dimensions:**

Single - 2-3/4" X 4-1/2" (for 1 fixture)  
3-gang - 6-7/16" X 4-1/2" (for 2 fixtures)  
4-gang - 8-3/8" X 4-1/2" (for 3 fixtures)

**Standard:** EF28, EF28D; EF18T and EF28T

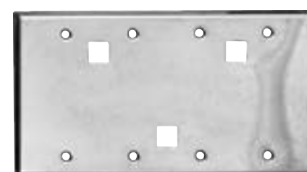
450.0129-E  
No square hole  
450.0194-E - 1/2"  
Square hole



450.0397-E  
No square hole  
450.1153-E - 1/2"  
Square hole



450.0398-E  
No square hole  
450.1155-E - 1/2"  
Square hole



**330.7583-E & 330.7584-E**

- Single or double round
- Die-cast aluminum construction
- Gasketed weatherproof
- Off-white or black powder paint finish only
- Mount direct to 4" octagonal box

**Dimensions:**

4-1/8" diameter  
3-9/16" mounting center

**Standard:** EF11 and EF11D

Off-white single  
330.7583-E



Black single  
330.7577-E



Off-white double  
330.7584-E



Black double  
330.7578-E



Gasket - 245.0100-E

**12804-E & 12805-E**

- Single or double rectangular
- Die-cast aluminum construction
- Gasketed weatherproof
- Silver gray enamel finish only
- Mount direct to standard outlet box

**Dimensions:**

4-5/8" X 2-7/8"  
3-1/4" mounting center

**Standard:** Non standard mounting plate

12804-E



12805-E

