

Survive-All™ SVX Combination Series

NEMA-4X, vandal resistant and harsh environment combination unit



Construction

- Full gasketed NEMA-4X housing
- Faceplate: heavy-duty, vandal-resistant polycarbonate
- Backplate: heavy-duty aluminum
- Heads protected by clear polycarbonate lens
- Comes with both Phillips head for NSF location and tamper-proof screws
- 6 inch EXIT lettering legend, available in red or green
- Field-selectable chevrons
- Choice of finishes: white, black or gray

Lamp type

- Choice of MR16 LED lamp wattages

Mounting

- Surface mount
- Canopy included for end or ceiling mount applications
- Universal J-box mounting
- 1/2 inch conduit entry on top and sides

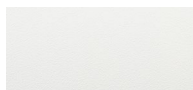
Choice of battery

- SVX12N model, nickel-cadmium battery, 6V-12W total battery capacity
- SVX24N model, nickel-cadmium battery, 12V-24W total battery capacity

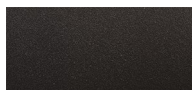
Photometric performance

Lamp	Spacing center-to-center (feet)	
	7' mounting height	15' mounting height
LA	39'	34'
LB	74'	57'
LG	49'	39'
LI	68'	54'
LJ	89'	80'

Housing color



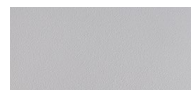
White



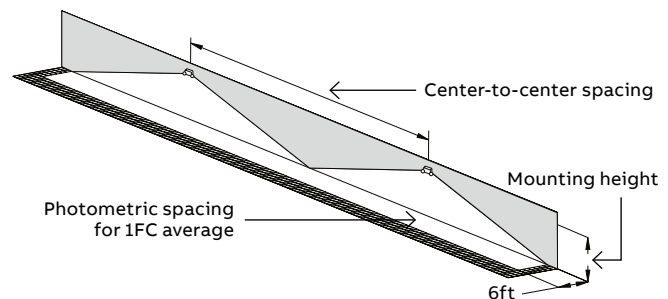
Black



Brushed aluminum



Gray



Special wording panels

- Available. Contact your sales representative with your design requirements

Electronics

- Magnetically operated test switch
- Standard Advanced Diagnostics (non-audible)
- Standard 15 minutes time delay
- Optional Nexus® monitoring system
- 120/277 60Hz

Approvals

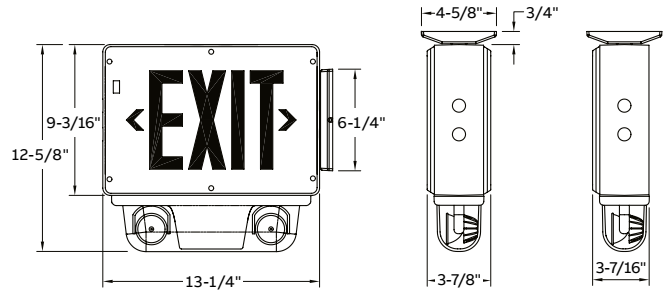
- UL 924 listed
- UL listed for wet and damp location (50°F to 104°F)
- UL listed for cold weather option (-40°C to +40°C/-40°F to +104°F)
- CSA-US listed for Nexus® option
- Meets NFPA101 (Life Safety Code), NFPA 70 NEC, OSHA illumination standards

Warranty

- Five-year limited warranty
- Detailed warranty terms located on page 178 or online at: www.emergi-lite.com/usa/files/EL_Warranty.pdf

Dimensions

Dimensions are approximate and subject to change.



Double face Single face

Unit rating

Sealed maintenance-free battery types	Battery capacity in watts			
	1-1/2 hrs	2 hrs	3 hrs	4 hrs
Nickel-cadmium	12	9	-	-
	24	18	12	9

Power consumption

Model	AC specs		DC specs (90 minutes)	
	120/277VAC	0.12/0.06A 13W	6V	12W
SVX12N	120/277VAC	0.12/0.06A 13W	6V	12W
SVX24N	120/277VAC	0.17/0.08A 19W	12V	24W

Accessories (order as a separate item)

Description	Part number
Additional special bit for tamper-proof screws	690.0454-E
Additional test magnet	199.0133-E

How to order

Housing/face color	Series/capacity	Faces	Legend color	Diagnostics	Housing
WW = White/white	SVX12N = 6V-12W	1 = Single face	R = Red legend	DA = Advanced Diagnostics (audible)	4X = Wet/damp locations
WB = White/black	SVX24N = 12V-24W	2 = Doubleface	G = Green legend	D = Advanced Diagnostics (non-audible)	
WA = White/aluminum				-NEX = Nexus® wired (contact your sales representative) ¹	
BB = Black/black				-NEXRF = NEXUS® wireless (contact your sales representative) ¹	
BW = Black/white					
BA = Black/aluminum					
GA = Gray/aluminum					
GW = Gray/white					
GB = Gray/black					

# of heads	Lamp type/wattage	Options
Blank = 0 heads ²	LA = 6V-4W, MR16 LED	Blank = No options
2 = Two heads	LB = 6V-5sW, MR16 LED	CW4 = Cold weather (-40°F/-40°C) ³
	LG = 12V-4W, MR16 LED	FA = Flasher (fire alarm activated)
	LI = 12V-5W, MR16 LED	FB = Flasher/buzzer (AC power failure)
	LJ = 12V-6W, MR16 LED	FL = Flasher (AC power failure)
		-208V = 208VAC, 60Hz input
		-240V = 240VAC, 60Hz input
		-208V50HZ = 208VAC, 50Hz input
		-CM = Canopy pendant mount

Example: WWSVX12N1RD4X2LG CW4

¹CSA US approved only, consult your sales representative

²Minimum load required: 20% of load capacity

³Single face only