

# Emergi-Lite

The quality name in  
emergency lighting!

**new**

New White LED in Emergency  
Battery Units and Remotes

Emergency lighting and Exit signage that meet safety code requirements combining performance, reliability and quality with cost efficiency.

We offer a complete range of specification grade emergency lighting products and accessories that also combine state-of-the-art technology and leading edge contemporary designs.

Architects, designers and facility managers are often challenged to decide between aesthetic appeal and occupant safety. No need to compromise with Emergi-Lite!

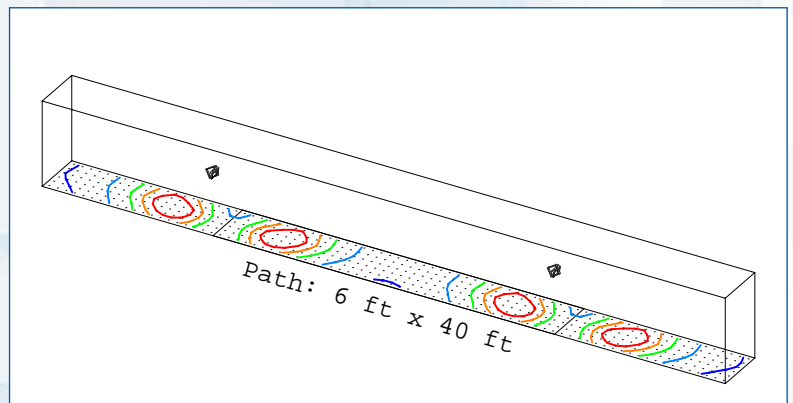
Since the introduction of our first production in 1978, Emergi-Lite has pioneered and has led engineering specifications in the manufacture of reliable, quality emergency lighting equipment

Harsh location lighting, state-of-the-art vandal resistant illumination in a visually appealing package for architectural, commercial and industrial environments



## MR16 LED Lamp for Unit Equipment & Remotes

- Input voltage: 12Vac or dc
- Input power: max. 4W (typical 3.6W)
- The MR16 lamp includes three 1-watt LEDs and electronic driver
- Operation life: min. 50,000 hours (typical 80,000 hours)
- Working temperature: max. 60°C (140°F)
- Color temperature: 6,000K white
- Total luminous flux: 178 lumen; (subject to continuous upgrade)
- Lighting performance equivalent to 12-16W Quartz Halogen and MR16
- 40" Center to center



- Twin emergency lights: 40-ft spacing and 7.5 ft mounting height.
- Average illumination: 1 fc along a 6-ft wide corridor