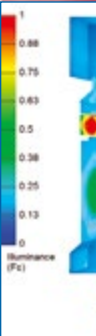


Emergi-Lite® has the expertise to design and provide code-compliant emergency lighting that meets your property's specific needs.



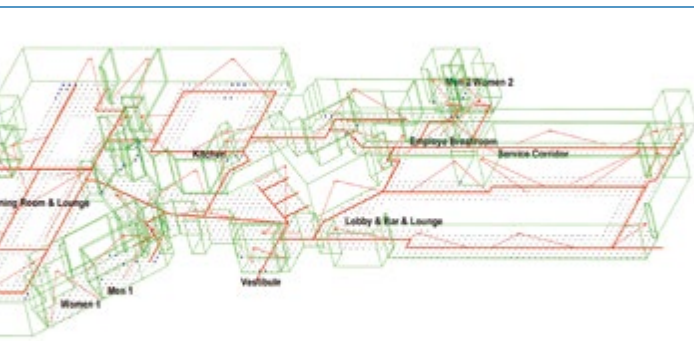
EMERGI-LITE

Know that your emergency lighting meets code requirements by allowing our technical design experts to plan your lighting scheme. Our lighting experts will analyze your specific emergency lighting requirements for each path of egress and provide a certified technical drawing. Our technical experts will calculate the exact distance between lighting units (spacing) needed to meet code requirements for emergency lighting at floor level. This calculation takes into consideration lamp power, installation height, exit path width, and surface reflectivity.



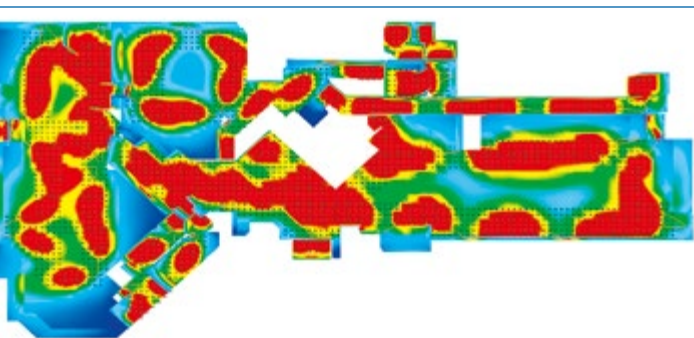
For example,

A technical drawing with dimensions of your floor plan is used to identify the path of egress to calculate your emergency lighting requirements.



The mounting height and lamp power of the lighting units is entered to calculate the spacing required for code-compliant illumination at floor level. This calculation can be done for different lighting units to determine the best solution. We'll show how different configurations affect installation as well as ongoing maintenance and testing for a true cost of ownership.

The illumination from the selected emergency lighting units is rendered to ensure that the path of egress will be lit in accordance with code requirements. Our experts are always up to date with the latest emergency lighting requirements, regulations and standards.



Your certified technical drawing shows that your emergency lighting plan meets code requirements, so you and your guests can rest easy.